



# SEE BETTER

AESCULAP® 3D *EinsteinVision*® 3.0

The current developments in health care pose a variety of challenges for hospitals, such as



- Increasing cost pressure
- Cost and treatment transparency
- Necessity for process optimization
- Increasing hygiene requirements
- Reduction of interfaces and errors
- Balance between employee satisfaction and time pressure
- Competition for patients



The question is posed as to how new products can contribute to bringing about improvements in these areas?

- Safety
- Time savings
- Error reduction
- Employee satisfaction



reddot design award  
winner 2017

# AESCU LAP® 3D *EinsteinVision*® 3.0 – See Better



## Premium 3D

EinsteinVision® 3.0 offers exceptional 3D image quality with native Full HD resolution. In addition, the system convinces with an impressive depth of field and high image contrast.

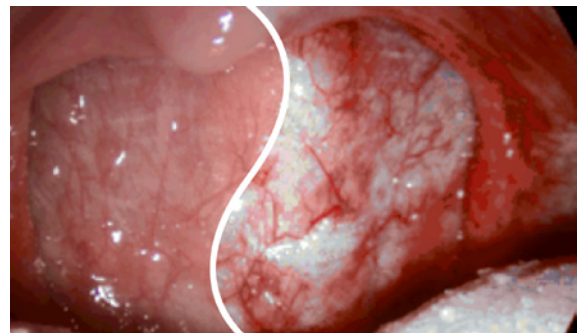
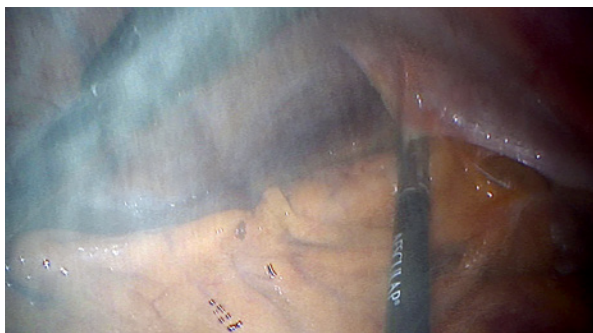
## Pure viewing pleasure

## Anti-fogging function

Fogged optics are bothersome, impair the view, disrupt work and can affect patient safety.

Integrated heating elements in the endoscope tip of the camera effectively and permanently prevent fogging of the optics within seconds.

## Complete perspective



## Smoke reduction

Electrosurgical current regularly generates disruptive smoke. Limited visibility conditions can have an influence on patient safety.

With the push of a button, a special algorithm reduces the impairment visibly.

## Clarity

## Red enhancement

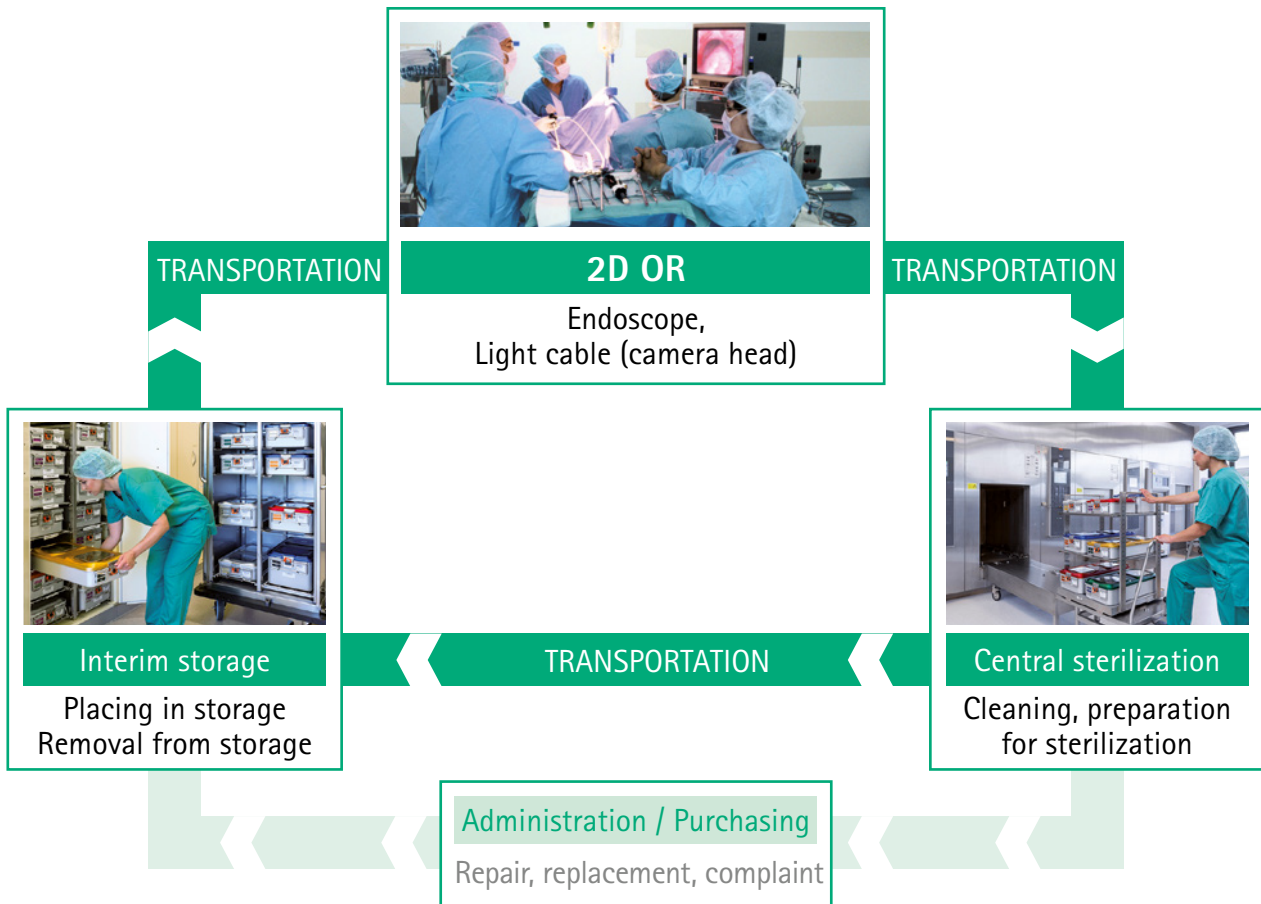
A clearer representation of vessels and greater differentiation of red tones are also desirable.

The integrated algorithm provides precisely that at the push of a button.

## Differentiated seeing



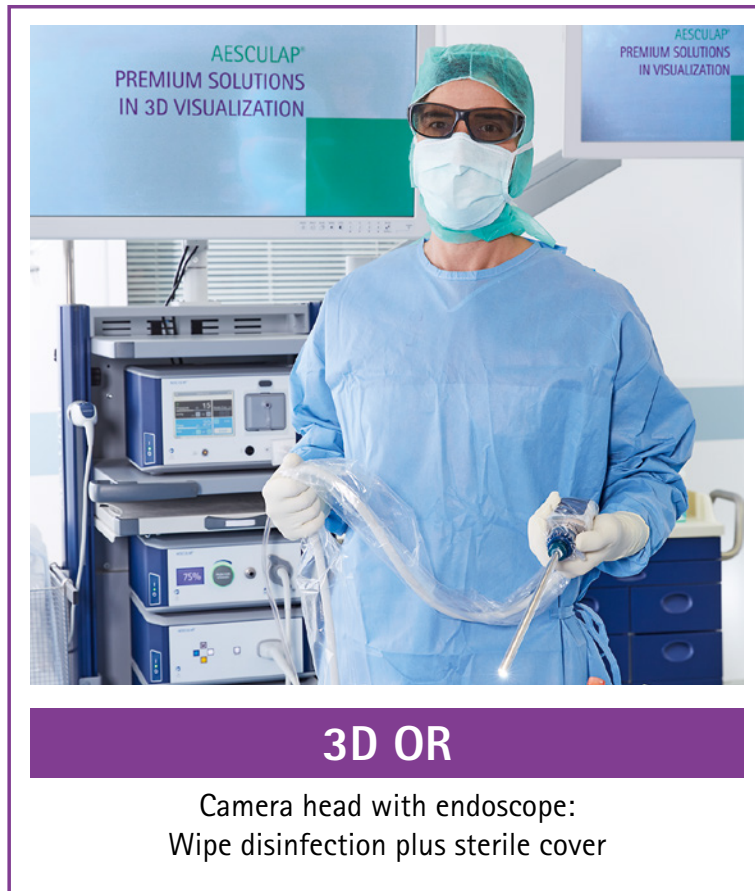
# Sterile provision of 2D components (endoscope, light cable)



## Problem

- Optical components are thermally sterilized and are thereby subject to constant wear (image quality loss for users)
- Process demonstrates numerous interfaces (sources of error)
- Regular repair and/or replacement (administrative effort)
- Stocking for OR operation and "emergencies" (investments and running costs)

# The 3D *EinsteinVision*<sup>®</sup> sterile delivery concept



Administration / Purchasing  
Repair

Sterile cover in one piece with shaft for  
endoscope and drapefoil for camera head  
and cable

## Solution

- Sterile cover: sterile barrier between patient and camera
- Process optimization (product remains in the OR)
- Fewer interfaces (saves time and reduces sources of error)<sup>1</sup>
- Consistent image quality (no thermal sterile preparation)<sup>2</sup>
- Cost transparency (minimal repairs)
- Simple handling<sup>3</sup>
- Reduces the risk of cross-contamination<sup>4</sup>

# SEE BETTER



reddot design award  
winner 2017

<sup>1</sup>The all-in-one EV3.0 camera head requires no adapters for endoscopes and light cables and can thus avoid a possible extension of surgery time (compared to other systems where the adapters are either lost or non-functional).

<sup>2</sup>Autoclaving exposes endoscopes and light cables to repeated thermal stress resulting to continuous image degradation, shorter life span and higher repair and replacement costs. The all-in-one EV3.0 camera head is not autoclaved, therefore image quality remains stable over the lifetime.

<sup>3</sup>97% of surgeons appreciated the "ease of use" in a questionnaire answered by 34 European surgeons.

<sup>4</sup>The EV3.0 camera head uses a separate sterile cover for each patient that is disposed of after the operation. This concept eliminates the potential risk of cross-contamination due to the underlying design concept.

# AESCULAP® 3D *EinsteinVision*® 3.0

## SEE BETTER



### Platform technology

In combination with EinsteinVision® 3.0, 3D and 2D camera heads are used.

Can be used universally



### Cable management

Integration of camera and light cable in a "mono-cable".

Less is more



### Autofocus effect

View the OR situs in sharp depth of focus without manual re-focusing.

Always in focus

To protect and improve  
the health of people around  
the world



reddot design award  
winner 2017



### ZOOM

Enlargement of image details  
with the push of a button

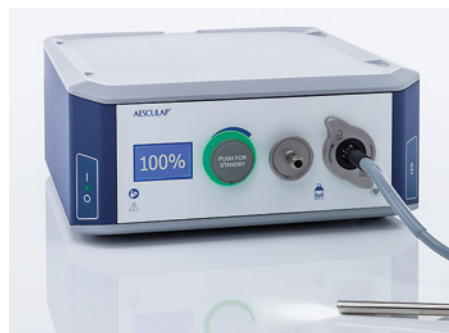
### Flexible



### Image rotation

When your image is "standing on its head" you can rotate it with the push of a button (180° image rotation).

### Adaptable



### Light

LED offers a long service life  
with a high quantity of light and less  
maintenance.

### Always available



### Handling

Box-shaped camera head design enables a  
proper orientation for the viewing position.

### Simply good

# AESCULAP® – a B. Braun brand

Aesculap AG | Am Aesculap-Platz | 78532 Tuttlingen | Germany  
Phone +49 7461 95-0 | Fax +49 7461 95-2600 | [www.aesculap.com](http://www.aesculap.com)

The main product trademark "Aesculap" is a registered trademark of Aesculap AG, the product trademark "EinsteinVision" is a registered trademark of "The Hebrew University of Jerusalem"

Subject to technical changes. All rights reserved. This brochure may only be used for the exclusive purpose of obtaining information about our products. Reproduction in any form partial or otherwise is not permitted.